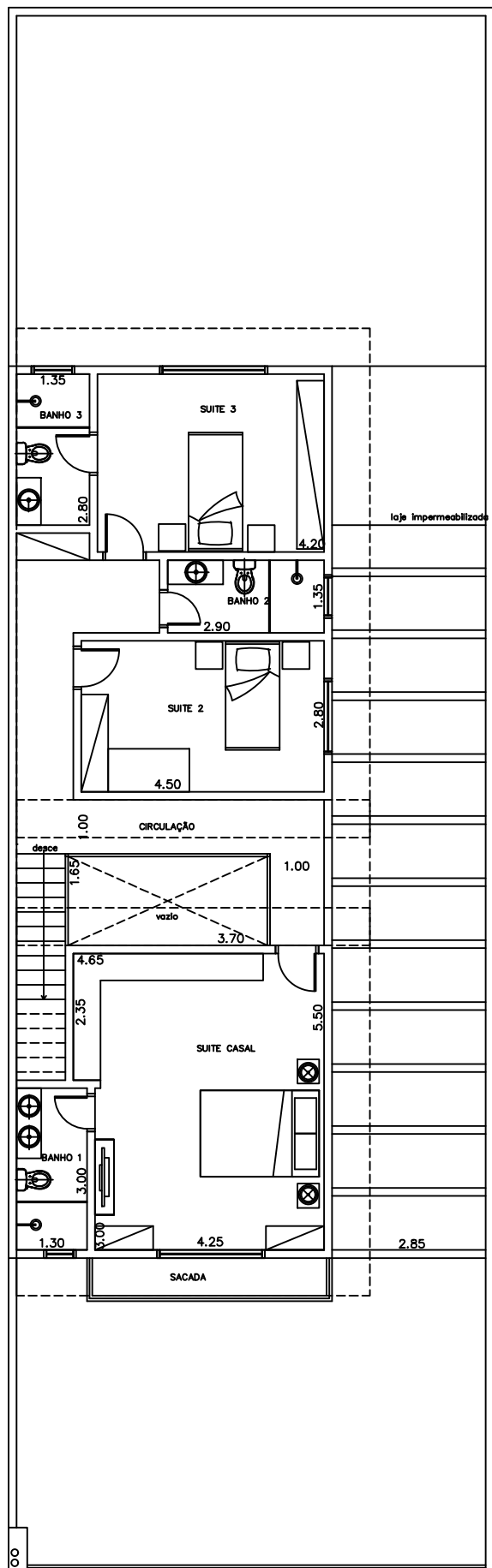


Planta Baixa – Térreo

AREA CONSTRUIDA PAV. INFERIOR = 108.00 M2
 AREA TOTAL CONSTRUIDA = 210.00 M2



Planta Baixa – Pav. Superior

AREA CONSTRUIDA PAV. SUPERIOR = 102.00 M2
 AREA TOTAL CONSTRUIDA = 210.00 M2